



55-57 Brake Line Instructions

There are five (5) pre-bent stainless brake lines in this kit. They are numbered one through five on the drawings. Line number one mounts on the front crossmember and they work back to number five on the rear coilover tube.

NOTE: Use anti-seize on all stainless threads, avoid getting anti-seize on tapered areas or inside the tubing.

All of the hardlines and their fittings, clamps and fasteners are stainless and included in this brakeline kit for the Morrison Tri-5 chassis. **NOTE: Before drilling a hole in the chassis test drill a hole in 1/8" thick material to check the hole diameter for the sheet metal screw that will hold the line clamps.** Start out with a 3/16" drill and if it is too loose use the next smallest a #16. If the hole in the chassis happens to come out the same size as the sheet metal screw and it will not hold there is a simple way to fix the problem. Use a small sharp center punch and tap it near the edge of the hole. It will push material towards the inside and the screw will hold tight. A drawing is supplied showing how this is done.

The lines from the master cylinder to the chassis are not included and need to be formed by the installer.

Mount the #1 tube first using the drawing as a guide on where the line fits on the crossmember. A couple of methods to locate the hole for mounting the line clamps is to tape the line in place set the clamp over the line as shown on the drawing and use a felt tip pen or a 3/16" transfer punch to locate the hole.

With the #1 line in place finger tighten the -3 TEE to the drivers side and the -3 ELBOW to the passenger side. This will locate where the hole is drilled for the 2" thru frame fitting. When mounting the right and left hand

THRU FRAME FITTINGS the best method is to drill a hole from either side of the chassis rather than all the way through. After the hole is located on the inside use a square and transfer that dimension to the outside of the rail. This will require a 5/8" drill, start out with a pilot drill 1/8" to 3/16" and work up to the 5/8". After these two fittings are installed the short braided lines can be installed and these will run to the front calipers.

Line #2 uses two line clamps to attach it to the frame, check the installation drawing for dimensions on clamp locations.

It is easiest to install the thru frame fitting on the rear crossmember before the long #3 line is installed. Feed the fitting from the rear with the nut on the front side of the crossmember.

Line #3 feeds from the front to the rear through the holes in the floor support on the driver's side. After all the lines are installed for the final time use silicone or some other sealer around the brake line where it passes through the chassis. Use the drawing to locate the best position for the line clamps.

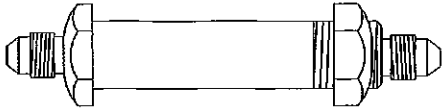
Line #4 runs up the frame and under the coilover crossmember, line #5 follows the bend in the crossmember to the passenger side of the chassis. These two lines will install easier if they are assembled (finger tight) and taped in place. Attach the -3 BULKHEAD TEE/W NUT to the BRAKE LINE MNT BRACKET on the drivers side and the -3 BULKHEAD 90/W NUT TO THE BRAKE LINE MNT BRACKET on the passenger side. With these two lines together and attached to the thru frame fitting at the 4-bar crossmember the lines can be taped in place the line clamps installed. Check the drawings for the clamp placement.

The three line clamps on the #5 line that fits on the round tube need to be clamped in a vice and tapped with a hammer to fold the top over in order to hold the brake line on a round tube.

After the mounting brackets are attached the 18" braided lines can be installed.

On some lines and in some locations the brake lines may need to be bent slightly. The stainless tubing bends very easy and it will not take much to move it, take your time and use a little caution when installing this kit and it will be an attractive functional addition to you chassis.

#32555859

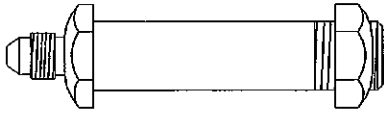


#52494148
THRU FRM 2" -3/-3

QTY 1

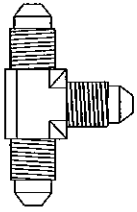
#52480113

-3 Both ends braided QTY 2
line 13" long (FRONT)



#52494146
THRU FRM 2" -3M/-3F

QTY 2

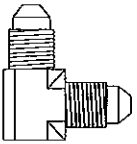


#52482500
-3 TEE

QTY 1

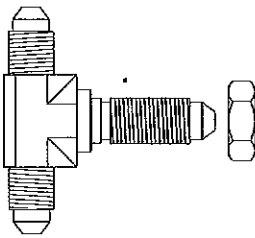
#52480118

-3 both ends braided QTY 2
line 18" long (REAR)



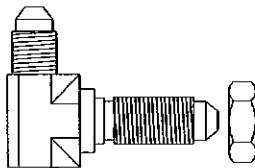
#52483500
-3 90° ELBOW

QTY 1



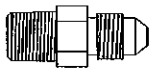
#52483503
-3 BULKHEAD TEE/W NUT

QTY 1



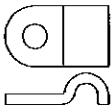
#52483504
-3 BULKHEAD 90°/W NUT

QTY 1



#52483505
-3 TO 1/8 NPT STRAIGHT

QTY 4



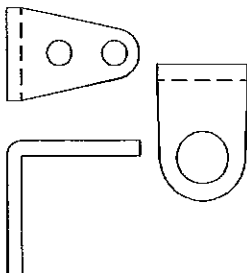
#52498516
3/16 LINE CLAMP

QTY 16



#70101100
10 X 1/2 SS SCREW

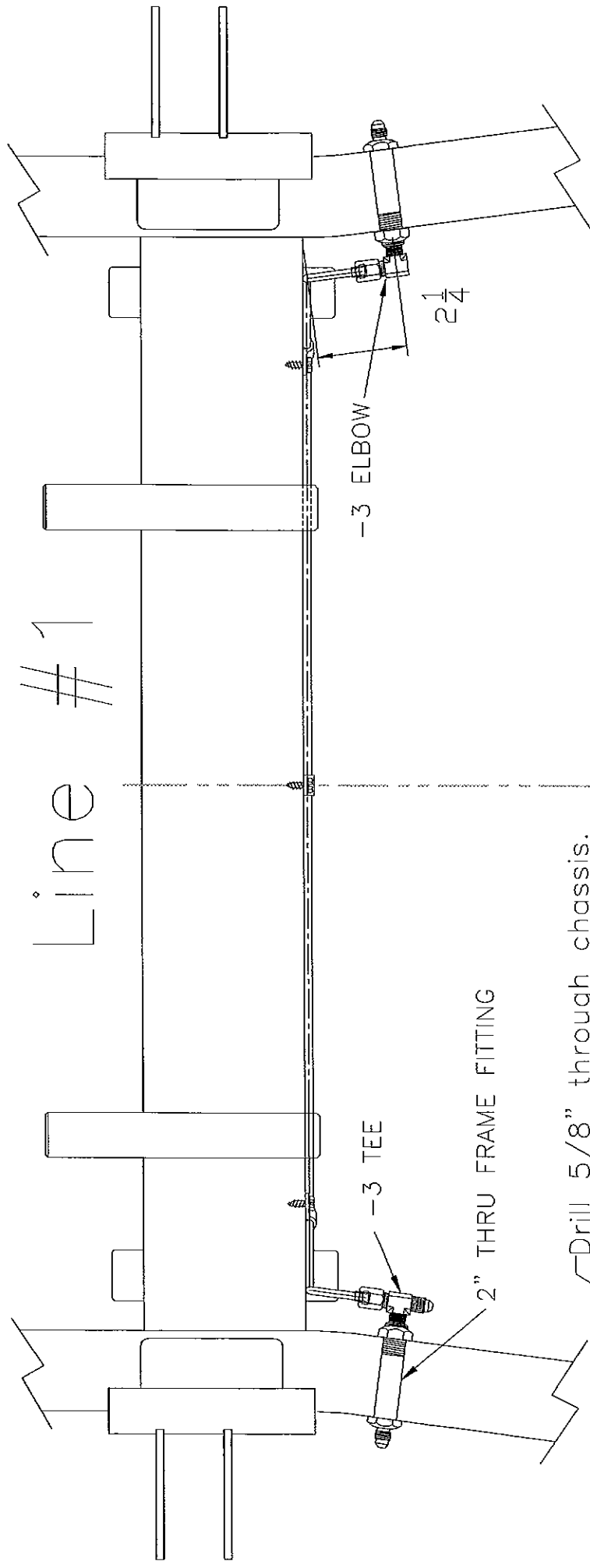
QTY 20



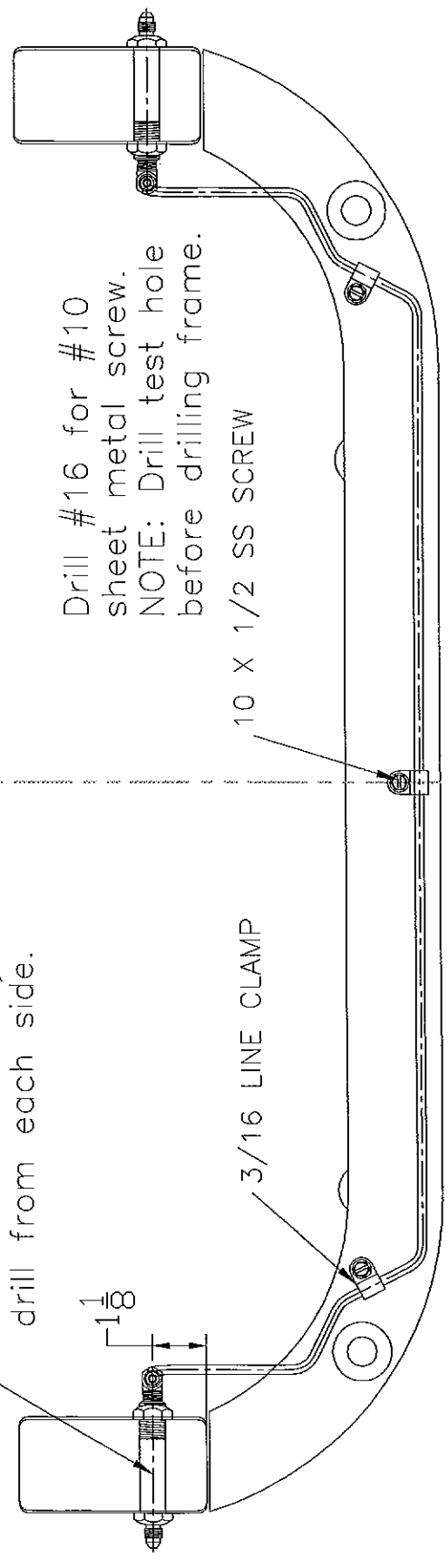
#32555848
BRAKE LINE MNT BRACKET

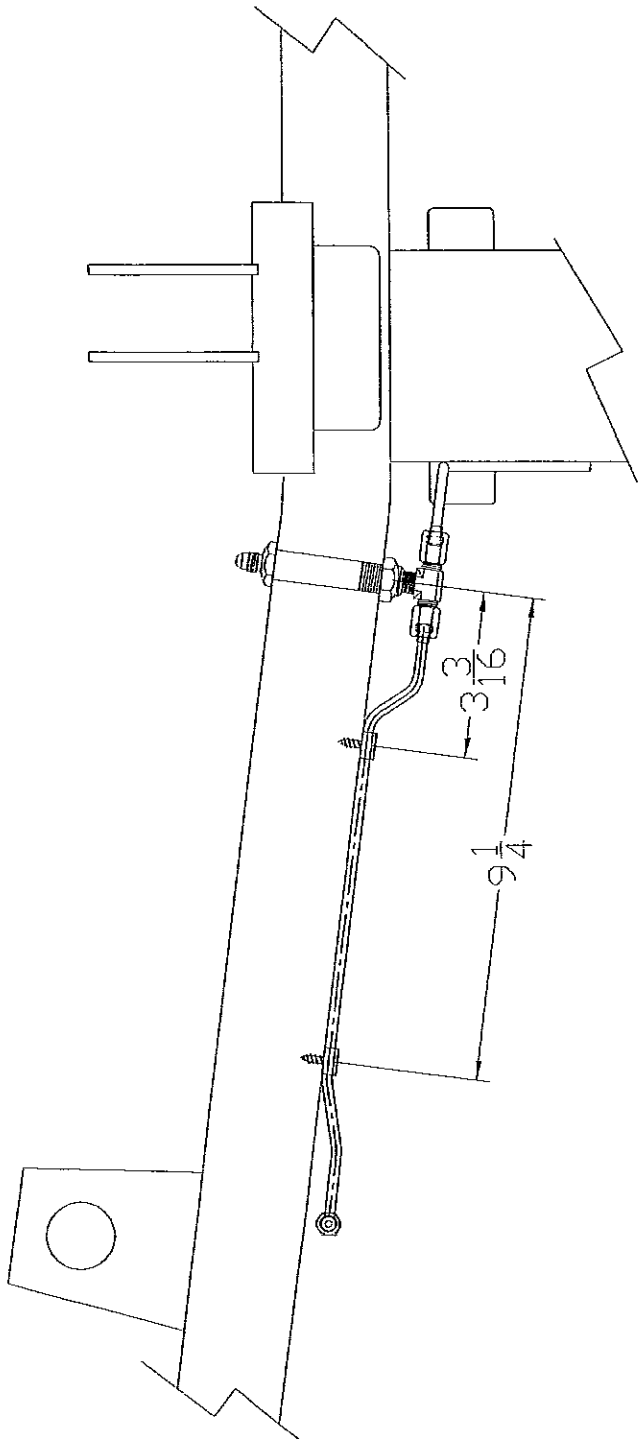
QTY 2

Line #1

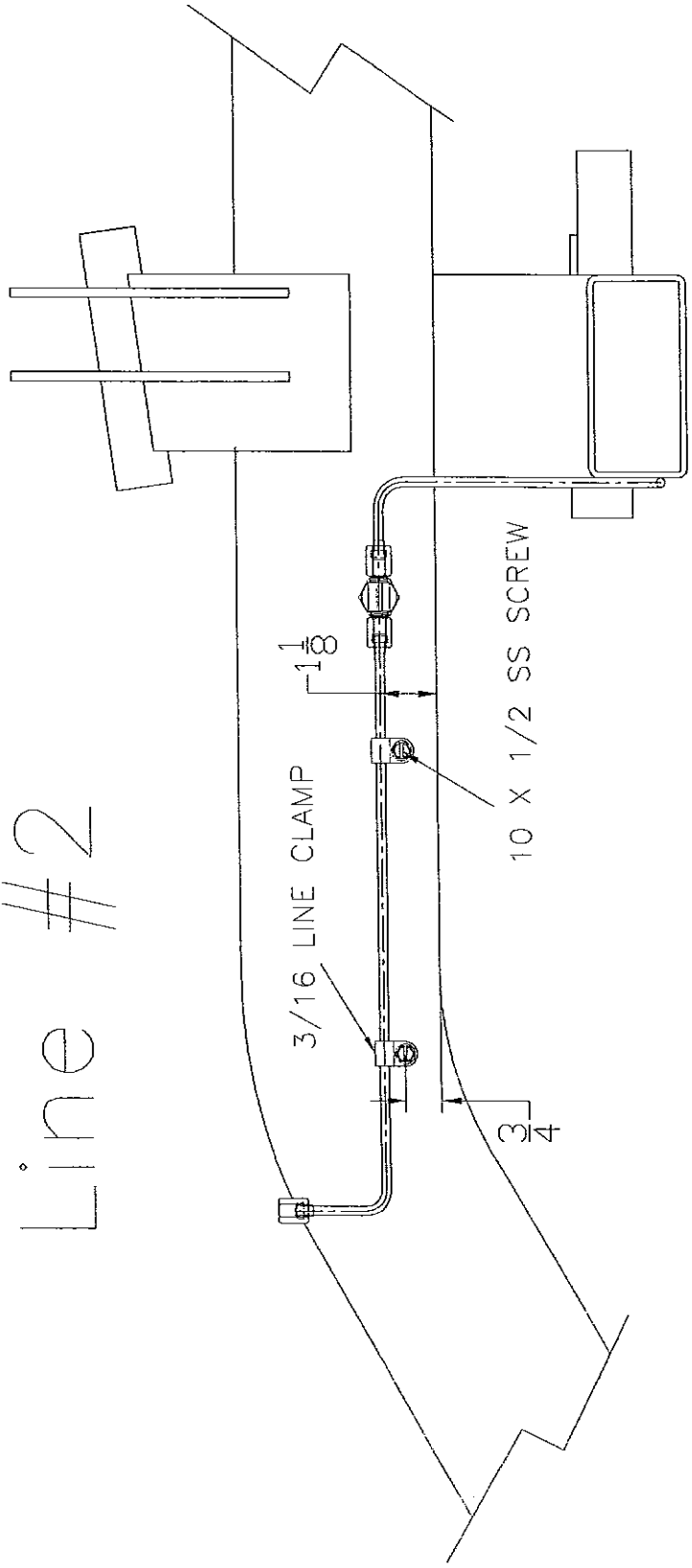


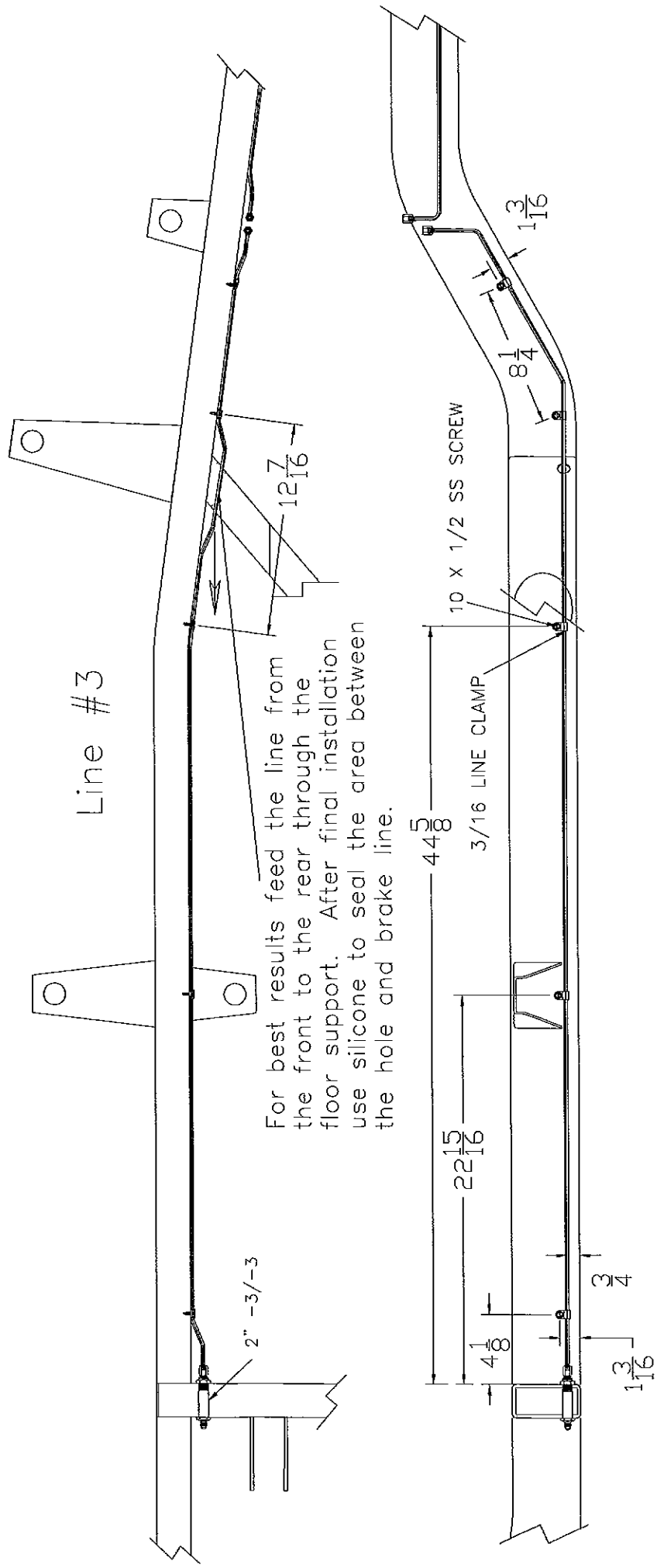
Drill $\frac{5}{8}$ " through chassis.
For best results layout and
drill from each side.





Line #2





Line #3

For best results feed the line from the front to the rear through the floor support. After final installation use silicone to seal the area between the hole and brake line.

10 X 1/2 SS SCREW
3/16 LINE CLAMP

2" -3/-3

12 7/16

44 5/8

22 15/16

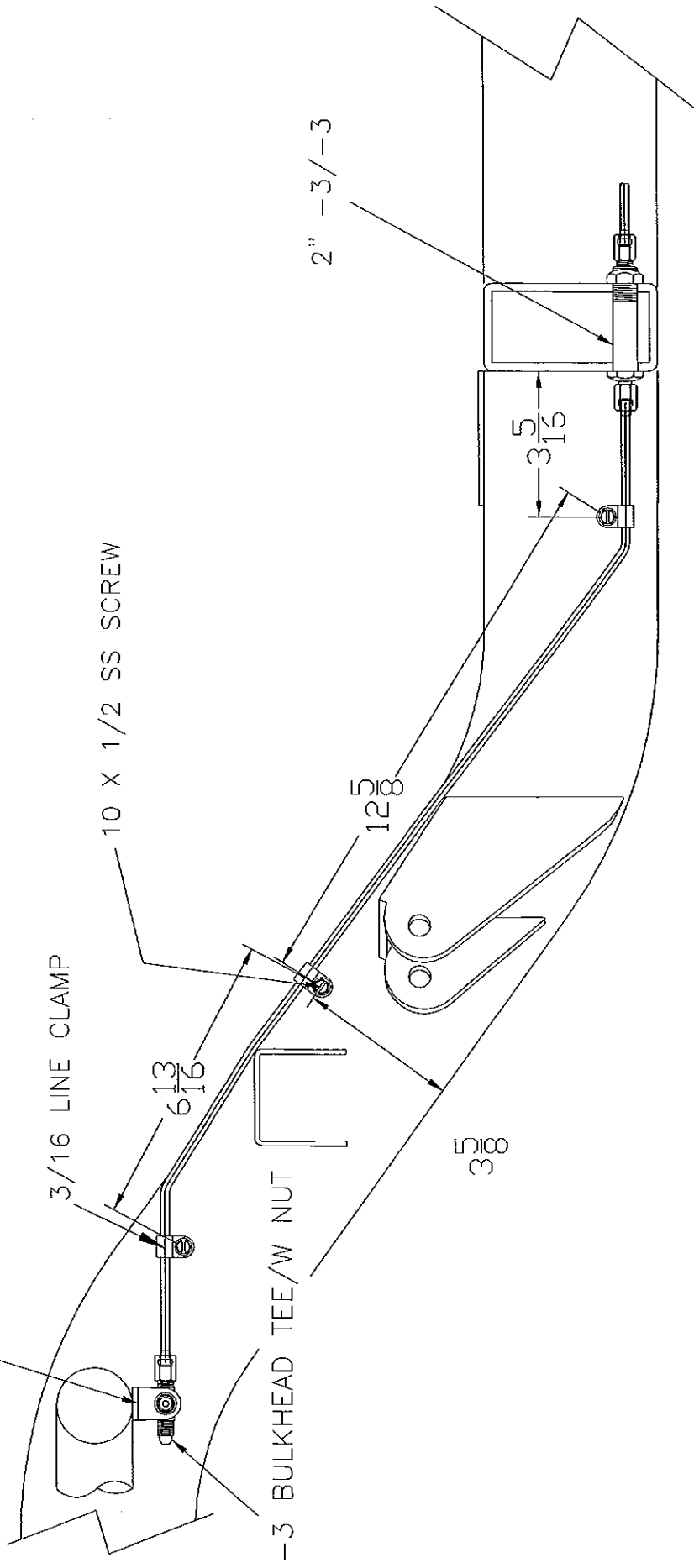
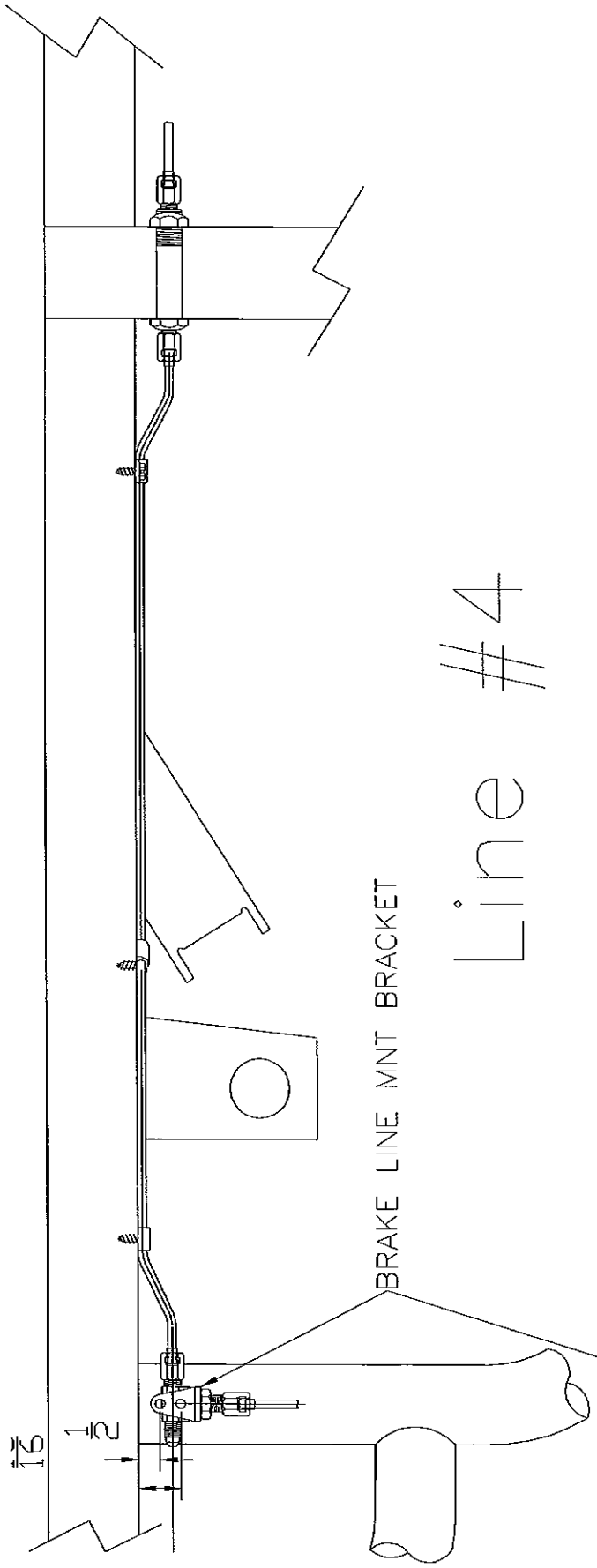
4 1/8

3/4

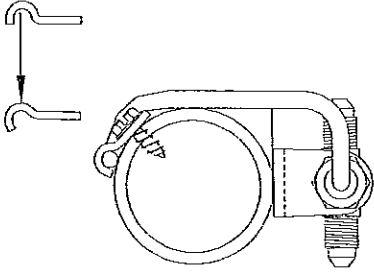
1 3/16

8 1/4

1 3/16



Line #5



NOTE: The line clamps will have to be set in a vise and tapped over to hold the brake line on the crossmember.

